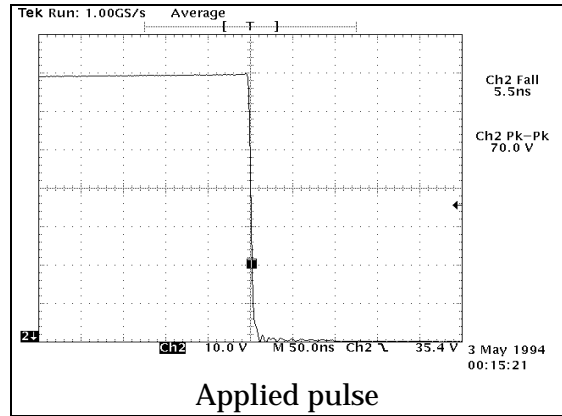


Step-Function Pulser/Receiver Adapter BLP11cb

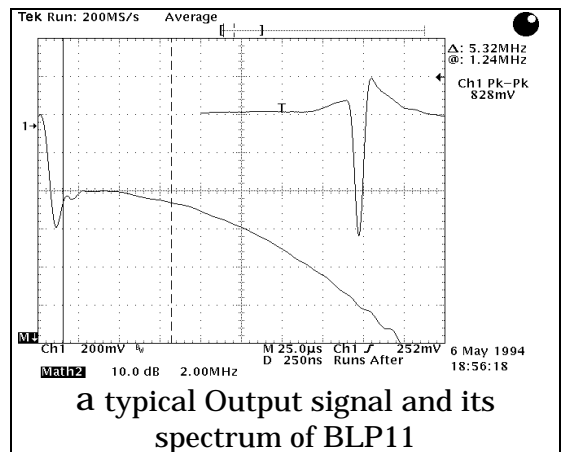
Technical Specifications

The BLP11b was developed to generate **real** shock-wave and amplify signals **parallel to the received pressure** with conventional wide band transducers. Applied pulse to transducer is Step-Function which is simple and most basic wave among various pulses. To invest sophisticated NDE, this wave form will simplify the phenomenon/results.



Features

- Real Shock-wave pressure generation (Unipolar-pulse pressure).
- Reproduction of received pressure.
- Wide-band of spectrum in energy.
- Easy phase detection.
- No interferences in near zone.
- High power for Lower frequency and/or Big diameter transducers.
- Optimize Output Impedance.



Technical Data:

No.	Descriptions	Specifications
0	Pulser type	Step-Function pulser
1	Pulser voltage	-100/-500V _{OP} (@ no load)
2	Rise time of pulser	5/10ns
3	Pulse energy	Full -100/-500V charge to transducer
4	Output impedance (Discharge resistance)	12, 25, 50, 75, 100, 150, 200, 300, 500, 750, 1kΩ(typical),Optionally 12, 25, 50, 75, 100, 150, 200, 300, 500, 1k, 2kΩ
5	Receiver input impedance	Same as Output impedance or high impedance (about 2KΩ + 50pF) after 10μS
6	Saturation input voltage	Approx. 0.6/6V(0dB/20dB ATT)
7	Max. gain	20dB
8	Frequency response	1.5(0.25)~150MHz
9	RF output level	0.6Vp-p
10	RF output impedance	50Ω

11	External trigger	TTL negative signal (1~20 μ s), or negative spike pulse (max. width: half the 500V1 μ)
12	PRF	Approx. 100Hz~10KHz
13	PRF for external trigger	Approx. 100Hz~20KHz
14	Dimensions	88(H) x 160(W) x 210(D)mm
18	Power supply	100V \pm 10V, 50/60Hz, 0.3VA

The appearance and specifications are subject to change for modifications without notice.

Options:

The following options are available as standard items.



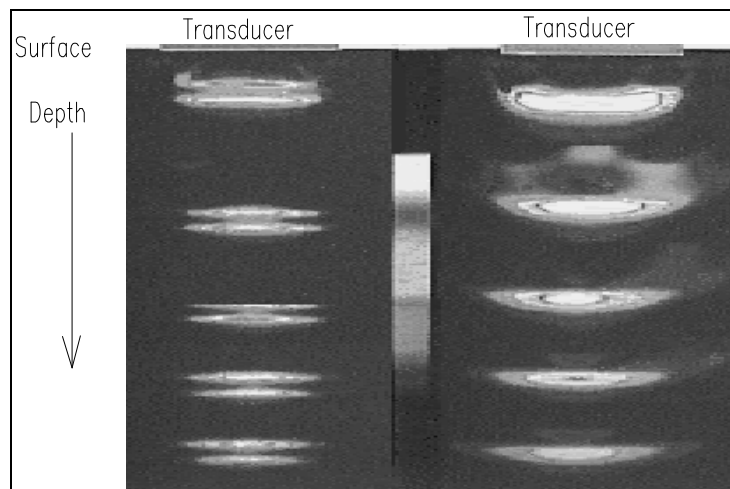
- OP1 - TTL Trigger Output and High Voltage Trigger Input (remove TTY Trigger Input)
- OP2 - TTL Trigger Output and TTL Trigger Input (remove High Voltage Trigger Input)
- OP3 - Modification of pulser voltage. Selectable from -100, -200, -300, -400, -500, -560V
- OP4 - Low frequency version: Frequency response of 0.05MHz~50MHz
- OP5 - Low cut filters: 0.2MHz, 0.5MHz, 1MHz, 2MHz, 5MHz
- OP6 - Attenuator and intermediate amplifier: +20dB gain and 0 ~ 31dB in 1dB step ATT
- OP7 - Adapter Box; Attenuator and intermediate amplifier: +20dB gain and 0 ~ 31dB in 1dB step ATT and HP,LPFilters

Special order

Step-function pulser is new and at the first stage of application. We will be glad to discuss or quote your special/unique requirement.

Typical pressure wave forms of transducers excited with Spike pulser(Left) and Step-function pulser(BLP11,Right). Using Ultrasonic visualization system UVP-11.

—
—
—
—
—



Imaging Supersonic Laboratories Co.,Ltd.

TEL : 81-742-40-2345, FAX : -40-2346, -47-4963

12-7 Tezukayama-nakamachi Nara-shi Nara
Japan

Home-page:<http://www.mahoroba.or.jp>
Email:iSL@sikasenbey.or.jp

or sikasenbey.or.jp/~isl/

